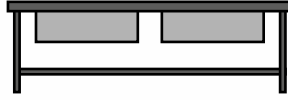


BUILT STRONG - BUILT TOUGH

STAINLESS STEEL EQUIPMENT



WWW.ACE-UK.COM

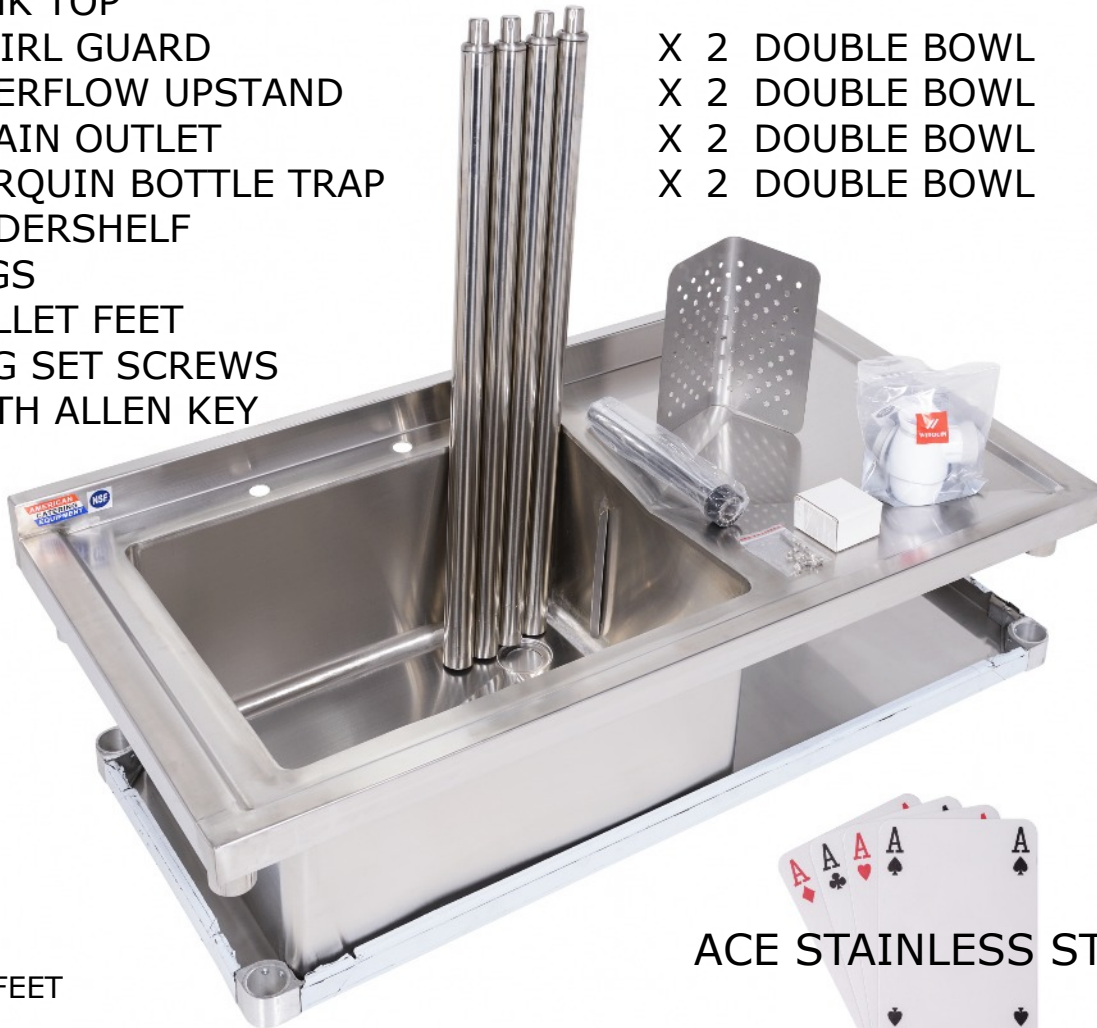
HEAVY DUTY
INDUSTRIAL
COMMERCIAL
MEDICAL
VETERINARY
RETAIL
WHOLESALE

SINK WITHOUT DRAINER - SSB - SSDB
SINK WITH DRAINER - SSLB - SSRB - SSDLB - SSDRB
SINK WITH DOUBLE DRAINER - SSCB - SSDCB

ASSEMBLY INSTRUCTIONS

CARTON CONTENTS

- | | |
|--------------------------------------|-----------------|
| 1 X SINK TOP | |
| 1 X SWIRL GUARD | |
| 1 X OVERFLOW UPSTAND | |
| 1 X DRAIN OUTLET | |
| 1 X WIRQUIN BOTTLE TRAP | |
| 1 X UNDERSHELF | |
| 4 X LEGS | |
| 4 X BULLET FEET | |
| 1 X BAG SET SCREWS
WITH ALLEN KEY | |
| | X 2 DOUBLE BOWL |
| | X 2 DOUBLE BOWL |
| | X 2 DOUBLE BOWL |
| | X 2 DOUBLE BOWL |



OPTIONS

- FLANGED FEET
- CASTORS
- TIE-BAR IN LIEU UNDERSHELF

ACE STAINLESS STEEL SINKS



JANUARY 2016

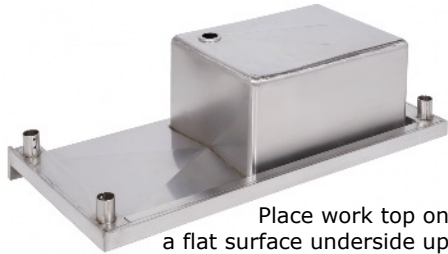
**AMERICAN
CATERING
EQUIPMENT**

AMERICAN CATERING EQUIPMENT (UK) LIMITED
5 CHANTRY COURT
SOVEREIGN WAY
CHESTER WEST
CHESTER CH1 4QN
UNITED KINGDOM
TELEPHONE: 44 (0) 1244 381281
FAX: 44 (0) 1244 381700
OFFICE: FSE@ACE-UK.COM
PARTS: PARTS@ACE-UK.COM
WEBSITE: WWW.ACE-UK.COM



SINK WITHOUT DRAINER - SSB - SSDB
SINK WITH DRAINER - SSLB - SSRB - SSDLB - SSDRB
SINK WITH DOUBLE DRAINER - SSCB - SSDCB

ASSEMBLY INSTRUCTIONS



Place work top on a flat surface underside up



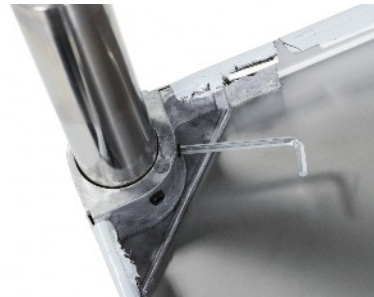
Insert legs into corner sockets



Place box or similar on underside of sink bowls



Place shelf underside up over the legs and level



Tighten set screws (2 per corner) to secure shelf
DO NOT OVER TIGHTEN



Tighten set screws (2 per leg) securing underframe to sink top
DO NOT OVER TIGHTEN



Flanged feet slide into leg secured by clip

Castors slide into leg tighten nut with spanner to secure



Turn sink upright and fit waste, taps and plumbing

For clear-under models assemble optional tie bar, place and fix as shelf above

Remove protective coverings

DO NOT USE SHARP IMPLEMENTS

**AMERICAN
CATERING
EQUIPMENT**

AMERICAN CATERING EQUIPMENT (UK) LIMITED
 5 CHANTRY COURT
 SOVEREIGN WAY
 CHESTER WEST
 CHESTER CH1 4QN
 UNITED KINGDOM

TELEPHONE: 44 (0) 1244 381281
 FAX: 44 (0) 1244 381700
 OFFICE: FSE@ACE-UK.COM
 PARTS: PARTS@ACE-UK.COM
 WEBSITE: WWW.ACE-UK.COM

